



UPPER CREEK

See Reverse Side
for Floor Plans

- 1½ story with 2 master suites with baths plus an extra ½ bath and a loft, built on a crawlspace
- 1,217 heated square feet, 472 unheated square feet
- An optional finished or unfinished basement can be added. A finished basement adds a 3rd master suite with bath, family room, and 864 heated square feet
- Covered gable porch & open deck
- 6x12 logs on main level with a Limited Lifetime Warranty
- Matching log siding on second level
- Premium high performance, Low-E windows and doors
- Conventional framed or pre-engineered I-joist roof framing system
- 30-year architectural shingles or 25 year ribbed metal roofing
- Premium door and window hardware

©2015 Walker Top Log Homes

updated 5/6/15



In Partnership With ...



675 S Old Piedmont Highway
Greenville, SC 29611

office 864-220-2884 • fax 864-220-2818
email Info@WalkerTop.com • www.WalkerTop.com

UPPER CREEK

Square Foot Totals

1st Floor = 864 ft²

2nd Floor = 353 ft²

Optional Basement = 864 ft²

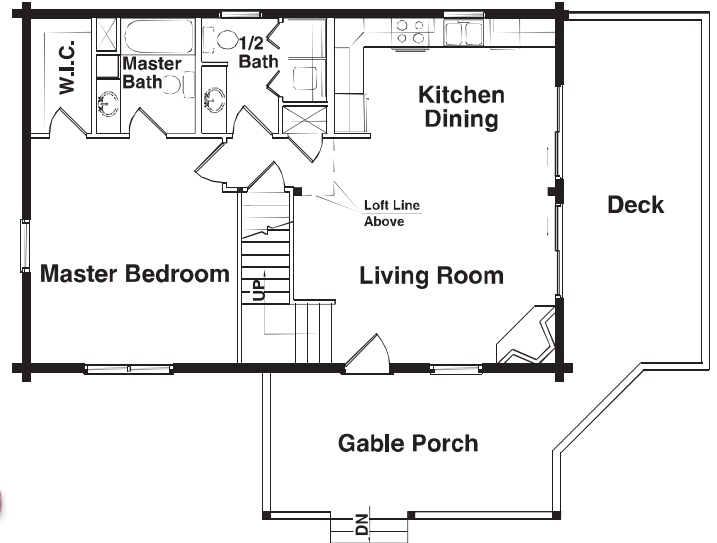
Total Heated ft² = 2,081 ft²

Deck = 272 ft²

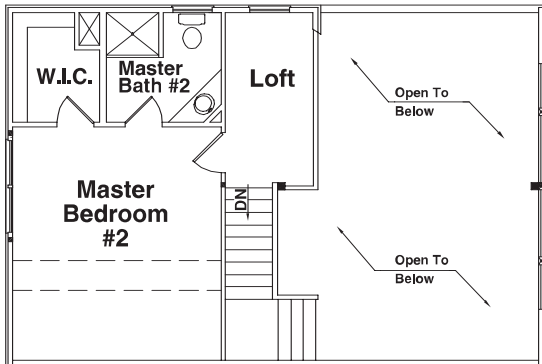
Porch = 200 ft²

Total Unheated ft² = 472 ft²

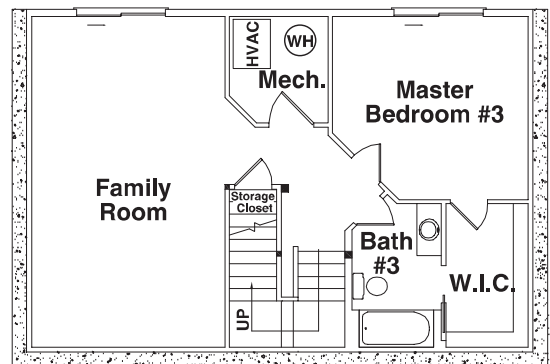
1st Floor Plan



2nd Floor Plan



Optional Basement Floorplan



©2015 Walker Top Log Homes

Artistic rendering of model house and floor plans, subject to change without notice or obligation.

updated 5/6/15



In Partnership With ...



675 S Old Piedmont Highway
Greenville, SC 29611

office 864-220-2884 • fax 864-220-2818
email Info@WalkerTop.com • www.WalkerTop.com