



HEMLOCK

See Reverse Side
for Floor Plans

- 1½ story on an unfinished basement with 2 master suites with baths and a loft
- 1,931 heated square feet, 2,796 unheated square feet
- An optional finished basement adds 3rd master suite with bath, family room and 804 heated square feet
- Covered porches & open decks
- 6x12 Logs on main level with a Limited Lifetime Warranty
- Log siding or board and batten on second level
- Premium high performance, Low-E windows and doors
- Conventional framed or pre-engineered I-joint roof framing system
- 30-year architectural shingles or 25 year ribbed metal roofing
- Premium door and window hardware

©2015 Walker Top Log Homes

updated 5/6/15



In Partnership With ...



675 S Old Piedmont Highway
Greenville, SC 29611

office 864-220-2884 • fax 864-220-2818
email Info@WalkerTop.com • www.WalkerTop.com

HEMLOCK

Square Foot Totals

1st Floor = 1,344 ft²

2nd Floor = 587 ft²

Optional Basement = 804 ft²

Total Heated ft² = 2,735 ft²

Unfinished Basement = 540 ft²

Rear Porch = 220 ft²

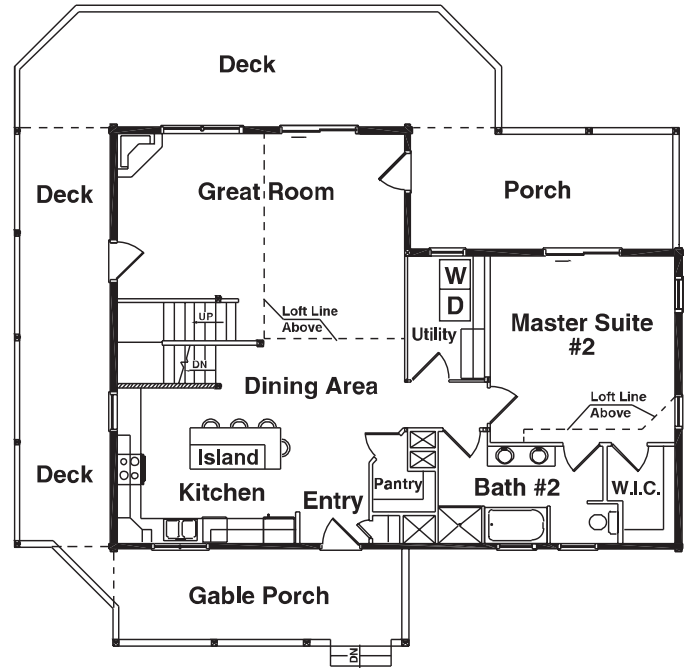
Gable Porch = 192 ft²

Lower Deck = 656 ft²

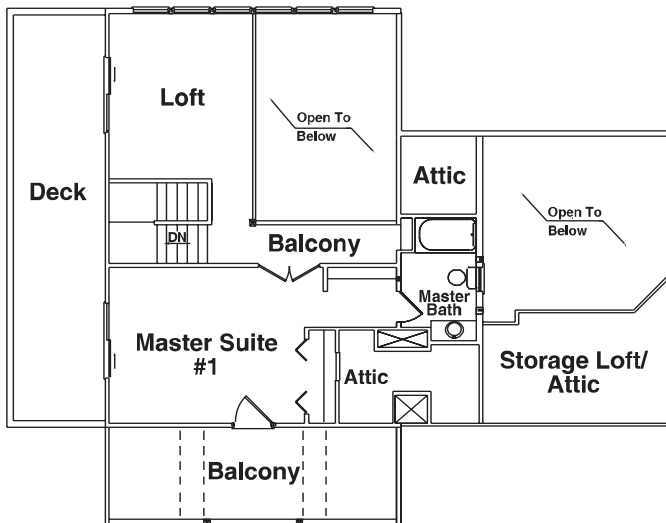
Upper Decks = 384 ft²

Total Unheated ft² = 1,992 ft²

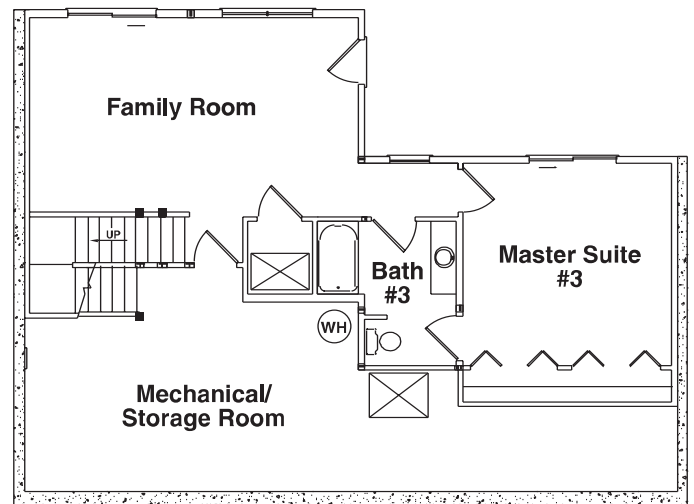
1st Floor Plan



2nd Floor Plan



Optional Basement Floor Plan



©2015 Walker Top Log Homes

Artistic rendering of model house and floor plans, subject to change without notice or obligation.

updated 5/6/15



In Partnership With ...



675 S Old Piedmont Highway
Greenville, SC 29611

office 864-220-2884 • fax 864-220-2818
email Info@WalkerTop.com • www.WalkerTop.com