



# HAWKSBILL

See Reverse Side  
for Floor Plans

- 1½ story with 2 bedrooms/2 bathrooms and a loft, built on a crawlspace
- 1,407 heated square feet, 566 unheated square feet
- An optional unfinished or finished basement can be added. Finished basement adds 1 bedroom, bath, family room, and 832 heated square feet
- Covered porches & open deck
- 6x12 Logs on main level with a Limited Lifetime Warranty
- Log siding and cedar shake siding on second level
- Premium high performance, Low-E windows and doors
- Conventional framed or pre-engineered I-joint roof framing system
- 30-year architectural shingles or 25 year ribbed metal roofing
- Premium door and window hardware

©2015 Walker Top Log Homes

updated 5/6/15



*In Partnership With ...*



675 S Old Piedmont Highway  
Greenville, SC 29611

office 864-220-2884 • fax 864-220-2818  
email [Info@WalkerTop.com](mailto:Info@WalkerTop.com) • [www.WalkerTop.com](http://www.WalkerTop.com)

# HAWKSBILL

## Square Foot Totals

1st Floor = 832 ft<sup>2</sup>

2nd Floor = 575 ft<sup>2</sup>

Optional Basement = 832 ft<sup>2</sup>

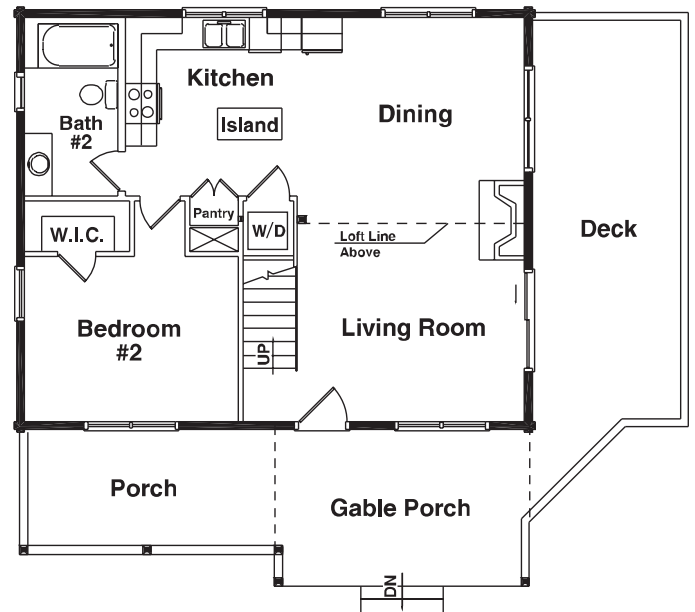
Total Heated ft<sup>2</sup> = 2,239 ft<sup>2</sup>

Deck = 278 ft<sup>2</sup>

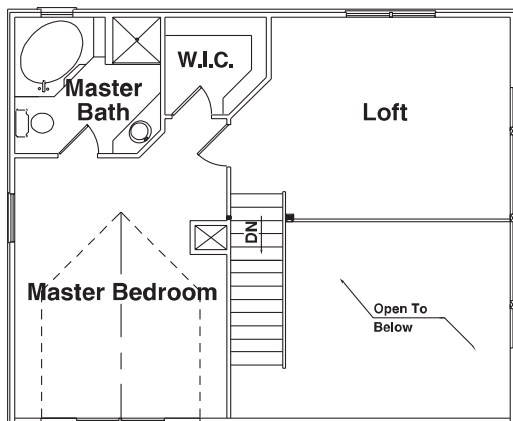
Porch = 288 ft<sup>2</sup>

Total Unheated ft<sup>2</sup> = 566 ft<sup>2</sup>

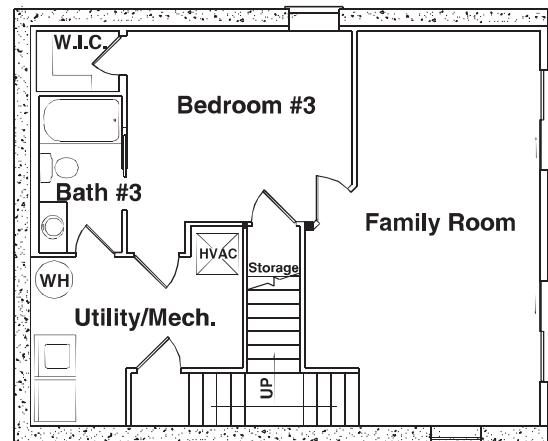
## 1st Floor Plan



## 2nd Floor Plan



## Optional Basement Floor Plan



©2015 Walker Top Log Homes

Artistic rendering of model house and floor plans, subject to change without notice or obligation.

updated 5/6/15



*In Partnership With ...*



675 S Old Piedmont Highway  
Greenville, SC 29611

office 864-220-2884 • fax 864-220-2818  
email Info@WalkerTop.com • www.WalkerTop.com