



# CELO

See Reverse Side  
for Floor Plans

- 1½ level on an unfinished basement with 3 bedrooms, 2½ baths and a loft
- 1,603 heated square feet, 1,746 unheated square feet
- An optional finished basement adds 1 bedroom, bath, family room, and 936 heated square feet
- Covered porches & open decks
- 6x12 logs on main level with a Limited Lifetime Warranty
- Board and batten or log siding on second level
- Premium high performance, Low-E windows and doors
- Conventional framed or pre-engineered I-joist roof framing system
- 30-year architectural shingles or 25 year ribbed metal roofing
- Premium door and window hardware

©2015 Walker Top Log Homes

updated 5/6/15



*In Partnership With ...*



675 S Old Piedmont Highway  
Greenville, SC 29611

office 864-220-2884 • fax 864-220-2818  
email [Info@WalkerTop.com](mailto:Info@WalkerTop.com) • [www.WalkerTop.com](http://www.WalkerTop.com)

# CELO

## Square Foot Totals

1st Floor = 936 ft<sup>2</sup>  
 2nd Floor = 667 ft<sup>2</sup>  
 Optional Basement = 936 ft<sup>2</sup>  


---

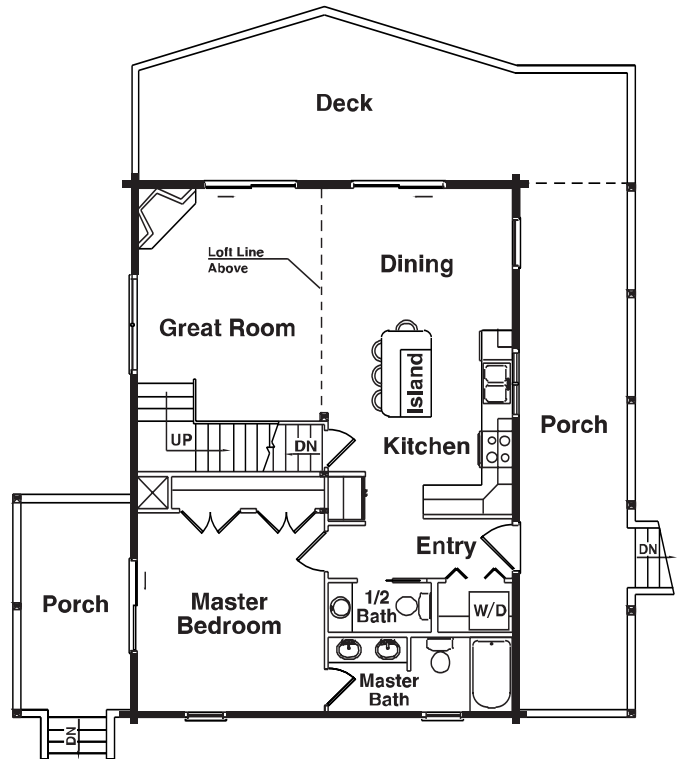
 Total Heated ft<sup>2</sup> = 2,539 ft<sup>2</sup>

Deck = 324 ft<sup>2</sup>  
 Porch = 408 ft<sup>2</sup>  
 Balcony = 78 ft<sup>2</sup>  

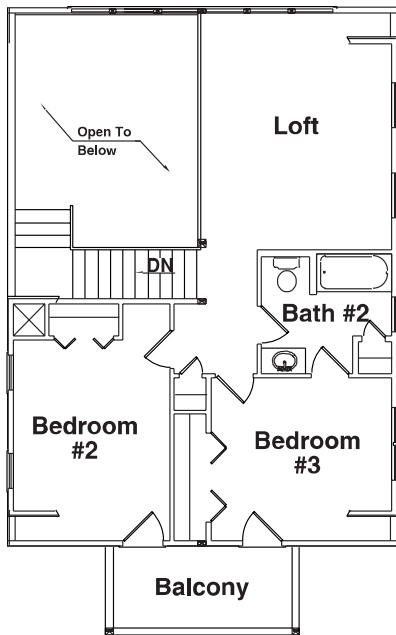

---

 Total Unheated ft<sup>2</sup> = 810 ft<sup>2</sup>

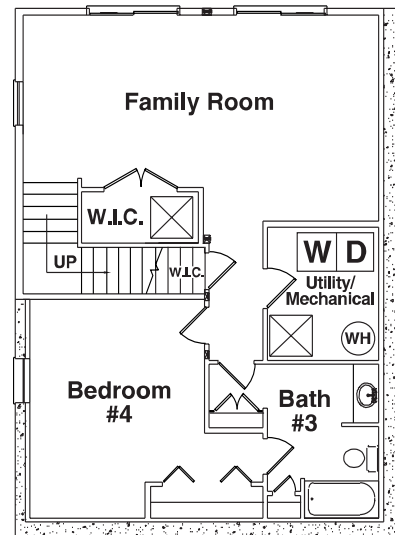
## 1st Floor Plan



## 2nd Floor Plan



## Optional Basement Floor Plan



©2015 Walker Top Log Homes

Artistic rendering of model house and floor plans, subject to change without notice or obligation.

updated 5/6/15



*In Partnership With ...*



675 S Old Piedmont Highway  
 Greenville, SC 29611

office 864-220-2884 • fax 864-220-2818  
 email Info@WalkerTop.com • www.WalkerTop.com